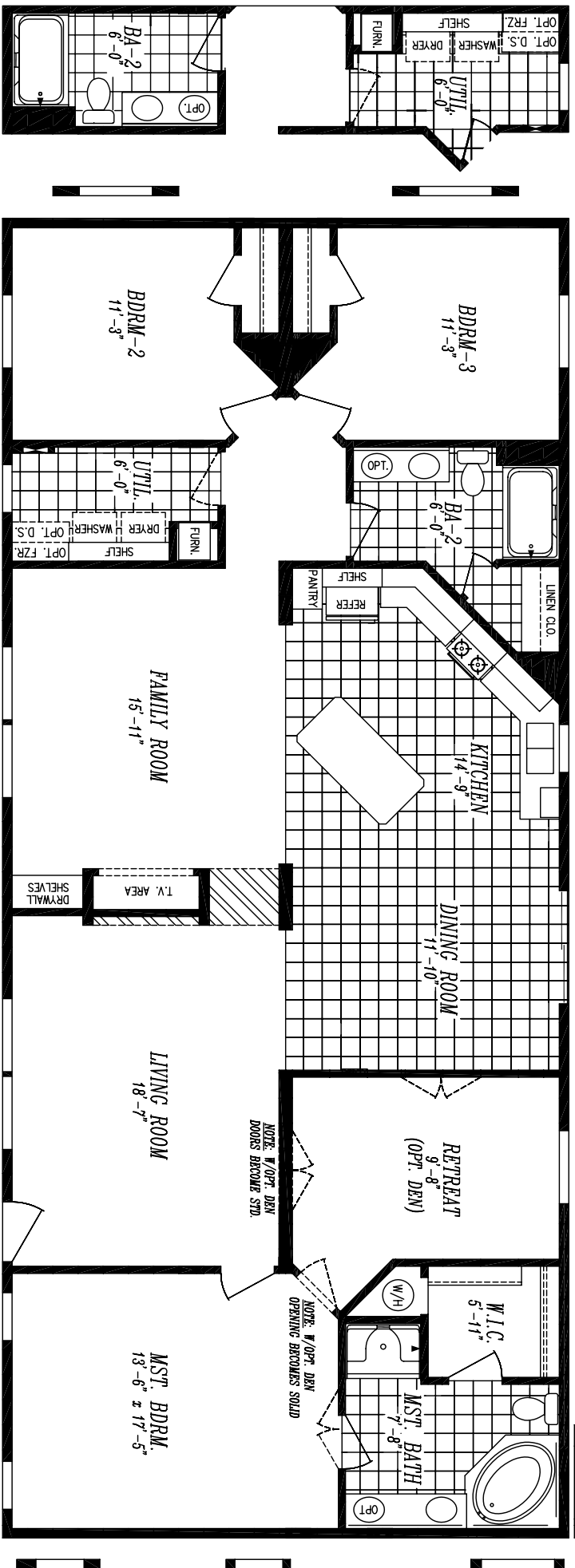


FIRST EDITION 7030-9750
 30'-0" x 70'-0"
 APPROX. 2,100 SQ. FT.



OPT. FLIPPED BATH
 AND UTILITY

OPT. UTIL. DOOR IPO WINDOW

OPT. (3) WINDOWS

T.V. AREA
 DRYWALL SHELVES

OPT. SEE-THRU
 FIREPLACE

OPT. REC. ENTRY

